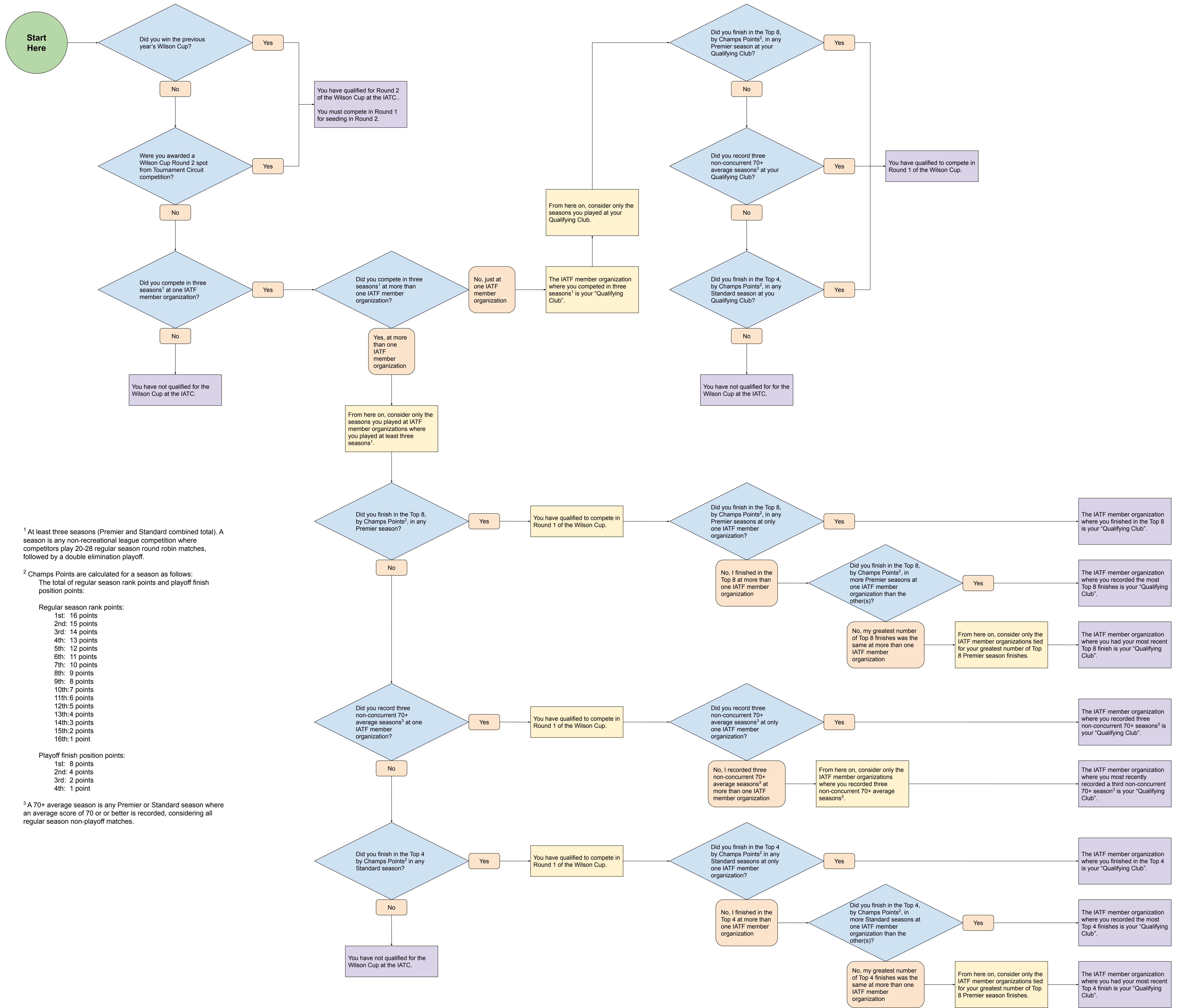


Flowchart: Have I Qualified for the Wilson Cup at the IATC?



¹ At least three seasons (Premier and Standard combined total). A season is any non-recreational league competition where competitors play 20-28 regular season round robin matches, followed by a double elimination playoff.

² Champs Points are calculated for a season as follows:
The total of regular season rank points and playoff finish position points:

- Regular season rank points:
- 1st: 16 points
 - 2nd: 15 points
 - 3rd: 14 points
 - 4th: 13 points
 - 5th: 12 points
 - 6th: 11 points
 - 7th: 10 points
 - 8th: 9 points
 - 9th: 8 points
 - 10th: 7 points
 - 11th: 6 points
 - 12th: 5 points
 - 13th: 4 points
 - 14th: 3 points
 - 15th: 2 points
 - 16th: 1 point

- Playoff finish position points:
- 1st: 8 points
 - 2nd: 4 points
 - 3rd: 2 points
 - 4th: 1 point

³ A 70+ average season is any Premier or Standard season where an average score of 70 or better is recorded, considering all regular season non-playoff matches.