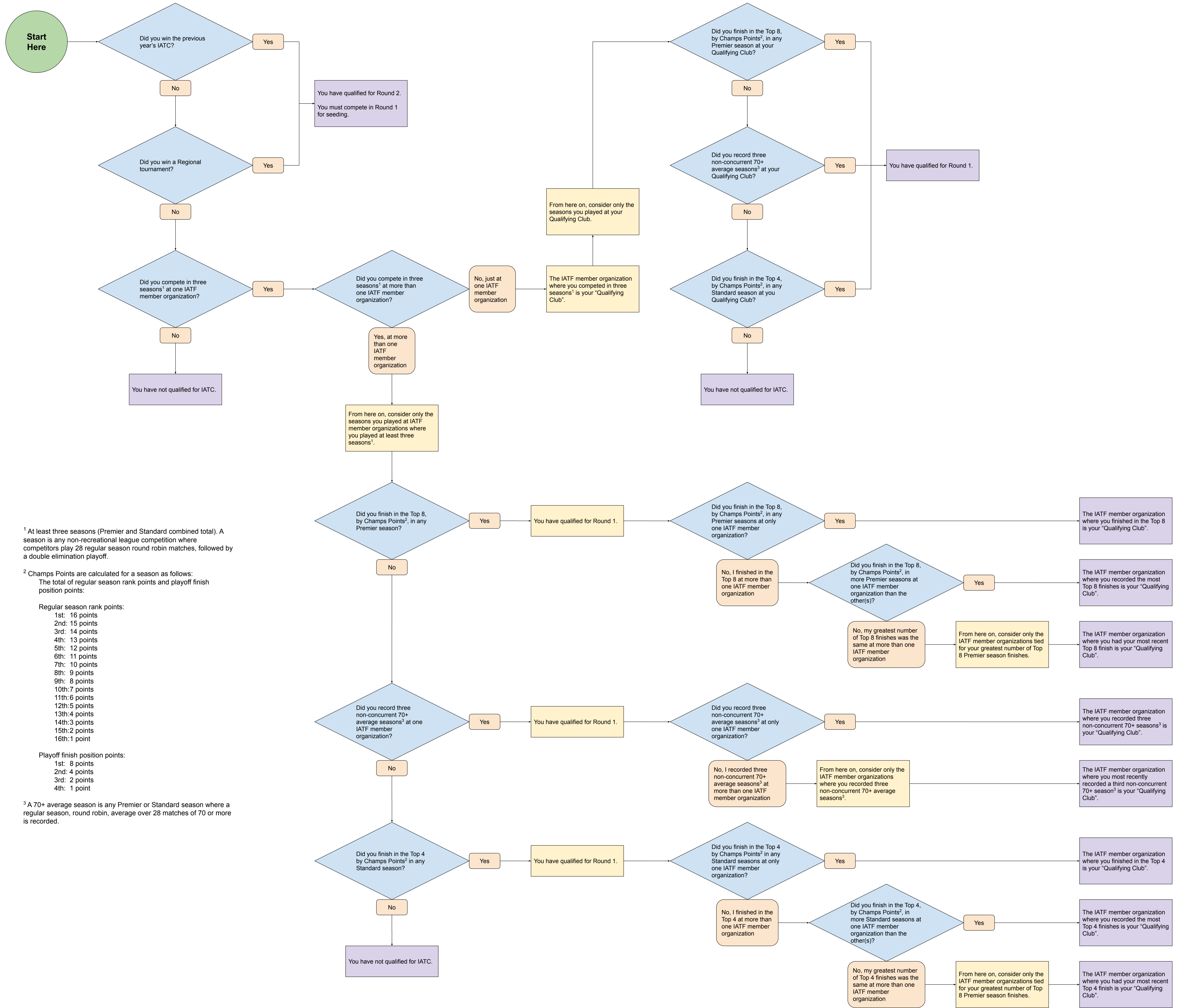


# Flowchart: Have I Qualified for IATC?



<sup>1</sup> At least three seasons (Premier and Standard combined total). A season is any non-recreational league competition where competitors play 28 regular season round robin matches, followed by a double elimination playoff.

<sup>2</sup> Champs Points are calculated for a season as follows:  
The total of regular season rank points and playoff finish position points:

Regular season rank points:

- 1st: 16 points
- 2nd: 15 points
- 3rd: 14 points
- 4th: 13 points
- 5th: 12 points
- 6th: 11 points
- 7th: 10 points
- 8th: 9 points
- 9th: 8 points
- 10th: 7 points
- 11th: 6 points
- 12th: 5 points
- 13th: 4 points
- 14th: 3 points
- 15th: 2 points
- 16th: 1 point

Playoff finish position points:

- 1st: 8 points
- 2nd: 4 points
- 3rd: 2 points
- 4th: 1 point

<sup>3</sup> A 70+ average season is any Premier or Standard season where a regular season, round robin, average over 28 matches of 70 or more is recorded.